

## Semiconductor Inspection

### Full 4K inspection System

HDMI 8MP camera and 4K LED monitor with high resolution macrozoom.

**Working Distance:** 100mm.

**Field of view:**

7.34 x 4.14 to 0.74 x 0.42mm

**Lighting:**

LED Ring, white light or polarising



Our higher resolution Video Microscope incorporating the 10x Zoom, 4K camera and 24" 4K LED monitor to give the sharpest images. No computer necessary to view and capture images at full 8MP resolution onto TF card in the camera. Mounted on a solid metal stand with quality fine/course focus adjustment. Can use our 60LED white ring light or polarising LED ring light. The base has mounting points for our mechanical XY stage.

### High Resolution Cameras

**CU4K** HDMI (4K Colour) includes on screen measuring.

1/1.8" imx226    8MP    3840x2160    30fps    1.85 micron



Pixelink (USB3 Global Shutter cameras, 2/3")

PL-D755-POL (mono) imx250MZR 5 MP    53 fps    3.45 micron

PL-D755 (M/C) imx250    5 MP    81 fps    3.45 micron

PL-753 (HDR) (M/C) imx421    2.8MP    143 fps    4.5 micron





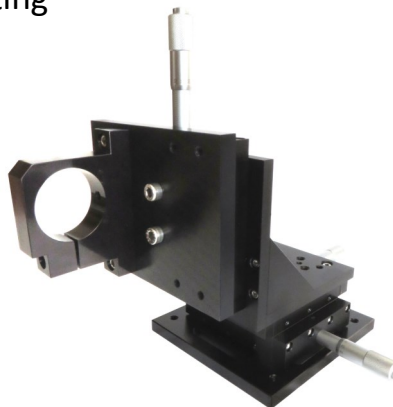
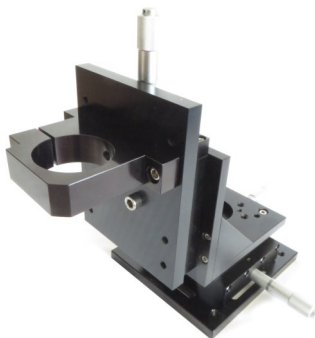
Navitar 12x  
Ultrazoom  
with Mitutoyo  
objective



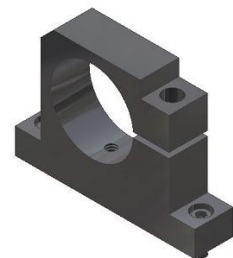
Navitar 12x Macro-  
zoom with co-axial  
light port

The versatile and high quality 12x modular zoom system from Navitar. Supplied as either an **Ultrazoom** to use with Mitutoyo LWD objectives or as **Macrozoom** to use with Navitar's lens attachments. Available with or without co-axial light ports. Available with or without detents. A large range of stands and adapters. A range of quality cameras (HDMI or USB3). Also available - ring light adapters and a range of LED HDMI monitors. Co-axial illuminator from the Moritex range.

XYZ Translation Stage for 10x or 12x zoom lenses  
for vertical or horizontal mounting



Mounting clamp for 10x  
or 12x zoom lens.





**Moritex LED illumination** - both the Constant Current MG-Wave & Constant Voltage CompaVis ranges of ring lights and Co-axial lights.



LED Right Light (60 LED's)  
with on/off + dimmer control  
80mm O/D 90-260V input  
Lens adapters available



LED Polarising Right Light (120 LED's)  
on/off + dimmer control  
90mm O/D Mains UK psu  
Lens adapters available



Full range of Mitutoyo LWD Objectives (x1, x2, 5, x7.5, x10, x20, x50, x100)



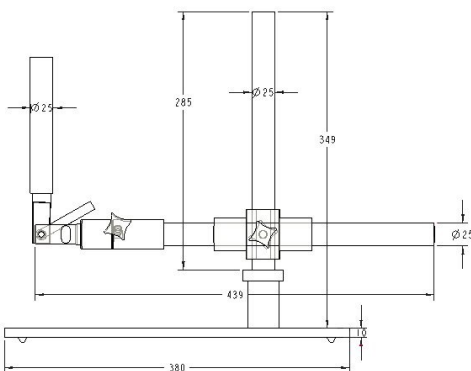
Heavy base Stand. 3 axis fine movement. Lens/Camera holder for horizontal viewing



Articulated stand with C "bench" clamp. Adjustable spigot



Boom arm with C "bench" clamp. Adjustable spigot



Heavy base boom stand. Spigots can be 20mm, 25mm, 32mm diameter



Articulated heavy base stand. Adjustable angle spigot



Metal pole stand. Fine/course focusing. LED sub-stage light. Mounting points for XY stage



Metal pole stand. Course focus. 32mm column. 50mm holder



Tall track stand with fine and course focus, 76mm holder and LED sub-stage light