

# HDMI Camera with image and video capture



- ◆ High resolution 2 MPixels at 60 fps
- ◆ High sensitivity and contrast
- ◆ image and video capture (without computer)
- ◆ image comparison function ( compare a stored image and live image simultaneously)
- ◆ Multiple line and cross-hair functions
- ◆ C-mount, 1920 x 1080 , 2.75 x 2.75  $\mu\text{m}$  pixels, 1/2.8" sensor

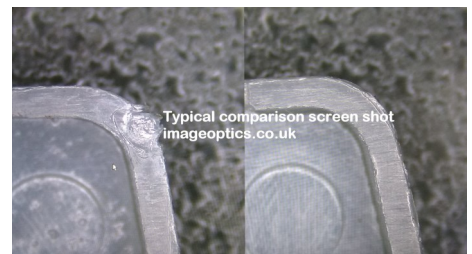
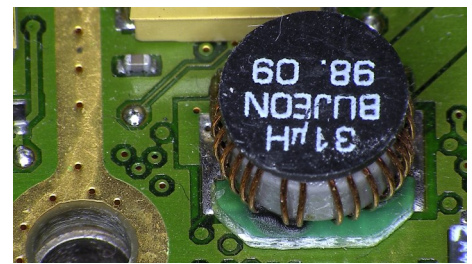
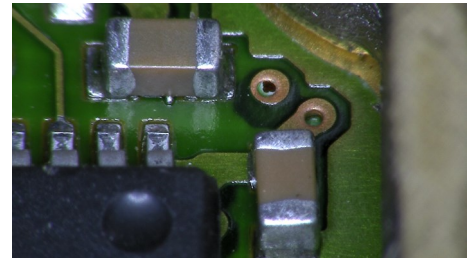
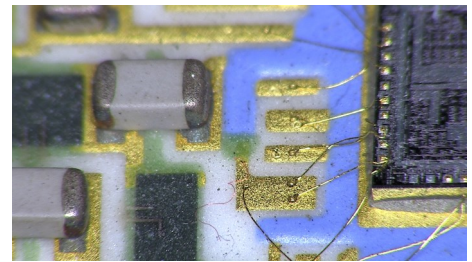
A full 2 Megapixel HDMI camera with functions to aid inspection and report writing. Connect to an HDMI monitor and see well illuminated high contrast images full screen.

Supplied with UK psu, a wireless mouse, SD card and HDMI cable. The wireless mouse gives controls over the main menu and thus access to two further menus.

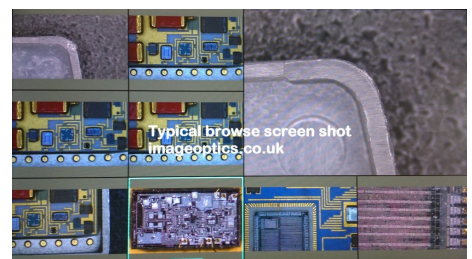
**Main menu controls:** digital magnification (up to x10), mirror, flip, freeze, monochrome, picture in picture (image comparison), image capture, video capture, browse captured images and videos, format SD card, camera settings (opens the camera menu) and line settings (opens line control settings).

**Camera settings** enables adjustment of Exposure, white balance, contrast, saturation, brightness, sharpness, red & blue levels

**Line controls** enables the operator to move multiple horizontal and vertical lines, change line width, change line colour, turn lines off, reset lines to default, enable small crosshair or large crosshair and thus their width and colour.



Typical image comparison screen shot



Typical browse screen shot